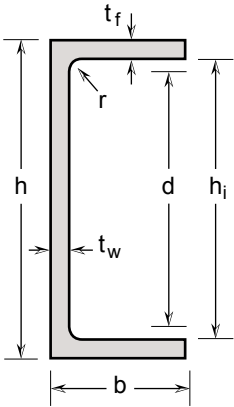


# MC



## Miscellaneous channels

### Hot rolled

dimensional tolerances and grades according to ASTM A276, ASTM A484, ASTM A479, ASME SA479, MTC EN 10204 3.1

### Laser fused

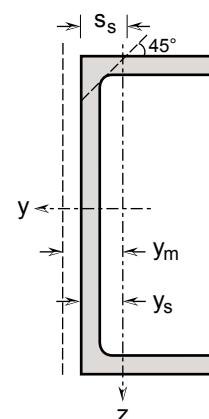
according to ASTM A1069, dimensional tolerances and grades, according to ASTM A276, ASTM A484, ASTM A479, ASME SA479, MTC EN 10204 3.1

### Stainless steel

Standard stainless steel grades 304/L and 316/L  
Annealed and pickled, lengths of 6000 -0/+100 mm

General properties									
Designation		Dimensions						Dimensions for detailing	
	G kg/m	h mm	b mm	t <sub>w</sub> mm	t <sub>f</sub> mm	r mm	A mm <sup>2</sup> x10 <sup>2</sup>	h <sub>i</sub> mm	d mm
MC 40 x 20 x 3	1.8	40	20	3	3	3	2.26	34.0	28.0
MC 50 x 25 x 3	2.3	50	25	3	3	3	2.86	44.0	38.0
MC 60 x 30 x 5	4.5	60	30	5	5	5	5.61	50.0	40.0
MC 60 x 30 x 6	5.3	60	30	6	6	6	6.63	48.0	36.0
MC 80 x 40 x 4*	4.9	80	40	4	4	2	6.10	72.0	68.0
MC 80 x 40 x 5	6.1	80	40	5	5	6	7.65	70.0	58.0
MC 80 x 40 x 6	7.2	80	40	6	6	6	9.03	68.0	56.0
MC 100 x 50 x 4	6.3	100	50	4	4	6	7.83	92.0	80.0
MC 100 x 50 x 5	7.7	100	50	5	5	6	9.65	90.0	78.0
MC 100 x 50 x 6	9.1	100	50	6	6	6	11.43	88.0	76.0
MC 120 x 60 x 6	11.1	120	60	6	6	6	13.83	108.0	96.0
MC 130 x 65 x 6	12.0	130	65	6	6	6	15.03	118.0	106.0
MC 150 x 75 x 6	13.8	150	75	6	6	2	17.30	138.0	134.0
MC 150 x 75 x 9*	20.3	150	75	9	9	2	25.40	132.0	128.0
MC 200 x 100 x 6*	18.6	200	100	6	6	2	23.30	188.0	184.0
MC 200 x 100 x 9*	27.5	200	100	9	9	2	34.40	182.0	178.0
MC 200 x 100 x 10*	30.4	200	100	10	10	2	38.02	180.0	176.0

Profiles are \* only available as laser fused with full penetration, non tapered, equivalent to hot rolled (r = laser seam).



Structural properties

Designation	Strong axis y-y					Weak axis z-z				$S_s$ mm	$I_t$ $\text{mm}^4 \times 10^4$	$I_w$ $\text{mm}^6 \times 10^9$	$y_s$ mm $\times 10$	$y_m$ mm $\times 10$
	$I_y$ $\text{mm}^4 \times 10^4$	$W_{el,y}$ $\text{mm}^3 \times 10^3$	$W_{pl,y}$ $\text{mm}^3 \times 10^3$	$i_y$ mm $\times 10$	$A_{vz}$ $\text{mm}^2 \times 10^2$	$I_z$ $\text{mm}^4 \times 10^4$	$W_{el,z}$ $\text{mm}^3 \times 10^3$	$W_{pl,z}$ $\text{mm}^3 \times 10^3$	$i_z$ mm $\times 10$					
MC 40 x 20 x 3	5.20	2.60	3.21	1.52	1.24	0.81	0.58	1.04	0.60	7.77	0.10	0.002	0.61	1.12
MC 50 x 25 x 3	10.60	4.24	5.14	1.93	1.54	1.65	0.93	1.68	0.76	7.77	0.12	0.006	0.73	1.43
MC 60 x 30 x 5	28.59	9.53	11.89	2.26	3.11	4.46	2.15	3.86	0.89	12.96	0.72	0.023	0.93	1.66
MC 60 x 30 x 6	32.71	10.90	13.88	2.22	3.75	5.13	2.52	4.51	0.88	15.55	1.32	0.025	0.96	1.61
MC 80 x 40 x 4*	58.91	14.73	17.47	3.11	3.14	9.22	3.23	5.82	1.23	9.18	0.36	0.092	1.15	2.36
MC 80 x 40 x 5	72.41	18.10	22.17	3.08	4.20	11.18	3.95	7.12	1.21	13.55	0.99	0.108	1.17	2.26
MC 80 x 40 x 6	83.26	20.82	25.71	3.04	4.95	12.95	4.64	8.36	1.20	15.55	1.61	0.121	1.21	2.24
MC 100 x 50 x 4	121.29	24.26	29.04	3.93	4.23	18.61	5.14	9.26	1.54	11.55	0.64	0.297	1.38	2.90
MC 100 x 50 x 5	146.27	29.25	35.22	3.89	5.20	22.59	6.31	11.37	1.53	13.55	1.15	0.353	1.42	2.88
MC 100 x 50 x 6	169.64	33.93	41.13	3.85	6.15	26.33	7.44	13.40	1.52	15.55	1.89	0.401	1.46	2.86
MC 120 x 60 x 6	301.45	50.24	60.16	4.67	7.35	46.77	10.90	19.65	1.84	15.55	2.18	1.053	1.71	3.49
MC 130 x 65 x 6	387.39	59.60	71.03	5.08	7.95	60.10	12.88	23.22	2.00	15.55	2.33	1.603	1.83	3.80
MC 150 x 75 x 6	599.04	79.87	93.60	5.88	8.78	93.78	17.35	31.26	2.33	13.18	2.21	3.386	2.10	4.48
MC 150 x 75 x 9*	845.13	112.68	134.60	5.77	12.89	132.91	25.10	45.24	2.29	19.18	7.33	4.572	2.20	4.38
MC 200 x 100 x 6*	1463.18	146.32	169.74	7.92	11.78	228.82	31.44	56.61	3.13	13.18	2.93	15.030	2.72	6.05
MC 200 x 100 x 9*	2096.41	209.64	246.74	7.81	17.39	328.68	45.85	82.60	3.09	19.18	9.76	20.850	2.83	5.95
MC 200 x 100 x 10*	2294.04	229.40	271.31	7.77	19.22	360.04	50.48	90.95	3.08	21.18	13.34	22.570	2.87	5.91