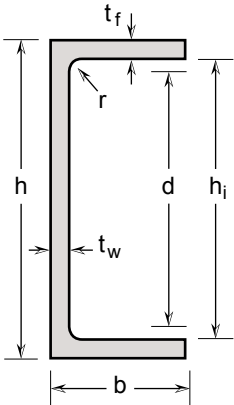


MC



Miscellaneous channels

Hot rolled

dimensional tolerances and grades according to ASTM A276, ASTM A484, ASTM A479, ASME SA479, MTC EN 10204 3.1

Laser fused

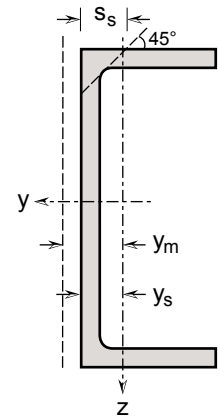
according to ASTM A1069, dimensional tolerances and grades, according to ASTM A276, ASTM A484, ASTM A479, ASME SA479, MTC EN 10204 3.1

Stainless steel

Standard stainless steel grades 304/L and 316/L
Annealed and pickled, lengths of 6000 -0/+100 mm

General properties									
Designation		Dimensions						Dimensions for detailing	
	G kg/m	h mm	b mm	t _w mm	t _f mm	r mm	A mm ² x10 ²	h _i mm	d mm
MC 40 x 20 x 3	1.8	40	20	3	3	3	2.26	34.0	28.0
MC 50 x 25 x 3	2.3	50	25	3	3	3	2.86	44.0	38.0
MC 60 x 30 x 5	4.5	60	30	5	5	5	5.61	50.0	40.0
MC 60 x 30 x 6	5.3	60	30	6	6	6	6.63	48.0	36.0
MC 80 x 40 x 4*	4.9	80	40	4	4	2	6.10	72.0	68.0
MC 80 x 40 x 5	6.1	80	40	5	5	6	7.65	70.0	58.0
MC 80 x 40 x 6	7.2	80	40	6	6	6	9.03	68.0	56.0
MC 100 x 50 x 4	6.3	100	50	4	4	6	7.83	92.0	80.0
MC 100 x 50 x 5	7.7	100	50	5	5	6	9.65	90.0	78.0
MC 100 x 50 x 6	9.1	100	50	6	6	6	11.43	88.0	76.0
MC 120 x 60 x 6	11.1	120	60	6	6	6	13.83	108.0	96.0
MC 130 x 65 x 6	12.0	130	65	6	6	6	15.03	118.0	106.0
MC 150 x 75 x 6	13.8	150	75	6	6	2	17.30	138.0	134.0
MC 150 x 75 x 9*	20.3	150	75	9	9	2	25.40	132.0	128.0
MC 200 x 100 x 6*	18.6	200	100	6	6	2	23.30	188.0	184.0
MC 200 x 100 x 9*	27.5	200	100	9	9	2	34.40	182.0	178.0
MC 200 x 100 x 10*	30.4	200	100	10	10	2	38.02	180.0	176.0

Profiles are * only available as laser fused with full penetration, non tapered, equivalent to hot rolled (r = laser seam).



Structural properties

Designation	Strong axis y-y					Weak axis z-z				S_s mm	I_t $\text{mm}^4 \times 10^4$	I_w $\text{mm}^6 \times 10^9$	y_s mm $\times 10$	y_m mm $\times 10$
	I_y $\text{mm}^4 \times 10^4$	$W_{el,y}$ $\text{mm}^3 \times 10^3$	$W_{pl,y}$ $\text{mm}^3 \times 10^3$	i_y mm $\times 10$	A_{vz} $\text{mm}^2 \times 10^2$	I_z $\text{mm}^4 \times 10^4$	$W_{el,z}$ $\text{mm}^3 \times 10^3$	$W_{pl,z}$ $\text{mm}^3 \times 10^3$	i_z mm $\times 10$					
MC 40 x 20 x 3	5.20	2.60	3.21	1.52	1.24	0.81	0.58	1.04	0.60	7.77	0.10	0.002	0.61	1.12
MC 50 x 25 x 3	10.60	4.24	5.14	1.93	1.54	1.65	0.93	1.68	0.76	7.77	0.12	0.006	0.73	1.43
MC 60 x 30 x 5	28.59	9.53	11.89	2.26	3.11	4.46	2.15	3.86	0.89	12.96	0.72	0.023	0.93	1.66
MC 60 x 30 x 6	32.71	10.90	13.88	2.22	3.75	5.13	2.52	4.51	0.88	15.55	1.32	0.025	0.96	1.61
MC 80 x 40 x 4*	58.91	14.73	17.47	3.11	3.14	9.22	3.23	5.82	1.23	9.18	0.36	0.092	1.15	2.36
MC 80 x 40 x 5	72.41	18.10	22.17	3.08	4.20	11.18	3.95	7.12	1.21	13.55	0.99	0.108	1.17	2.26
MC 80 x 40 x 6	83.26	20.82	25.71	3.04	4.95	12.95	4.64	8.36	1.20	15.55	1.61	0.121	1.21	2.24
MC 100 x 50 x 4	121.29	24.26	29.04	3.93	4.23	18.61	5.14	9.26	1.54	11.55	0.64	0.297	1.38	2.90
MC 100 x 50 x 5	146.27	29.25	35.22	3.89	5.20	22.59	6.31	11.37	1.53	13.55	1.15	0.353	1.42	2.88
MC 100 x 50 x 6	169.64	33.93	41.13	3.85	6.15	26.33	7.44	13.40	1.52	15.55	1.89	0.401	1.46	2.86
MC 120 x 60 x 6	301.45	50.24	60.16	4.67	7.35	46.77	10.90	19.65	1.84	15.55	2.18	1.053	1.71	3.49
MC 130 x 65 x 6	387.39	59.60	71.03	5.08	7.95	60.10	12.88	23.22	2.00	15.55	2.33	1.603	1.83	3.80
MC 150 x 75 x 6	599.04	79.87	93.60	5.88	8.78	93.78	17.35	31.26	2.33	13.18	2.21	3.386	2.10	4.48
MC 150 x 75 x 9*	845.13	112.68	134.60	5.77	12.89	132.91	25.10	45.24	2.29	19.18	7.33	4.572	2.20	4.38
MC 200 x 100 x 6*	1463.18	146.32	169.74	7.92	11.78	228.82	31.44	56.61	3.13	13.18	2.93	15.030	2.72	6.05
MC 200 x 100 x 9*	2096.41	209.64	246.74	7.81	17.39	328.68	45.85	82.60	3.09	19.18	9.76	20.850	2.83	5.95
MC 200 x 100 x 10*	2294.04	229.40	271.31	7.77	19.22	360.04	50.48	90.95	3.08	21.18	13.34	22.570	2.87	5.91